

2024-2025
PRODUCT BROCHURE

interhasa!®



Interhasa official
WeChat public account

TEL:400-860-8688
<https://www.interhasa.com>



HAND WASH/DRY ONE SET FAUCET

01 HSD-A3871
03 HSD-A3873
05 HSD-K1201
HSD-K1202
HSD-K1203
HSD-K1205

HIGH SPEED HAND DRYER

09	HSD-A3895	47	HSD-A90005
11	HSD-A3899	49	HSD-A3880
13	HSD-A3898T	51	HSD-A90001
15	HSD-A1688	52	HSD-A3885
17	HSD-A2688		HSD-A3900
19	HSD-A3886	53	HSD-A9025
21	HSD-A905	56	HSD-A3800
23	HSD-A1001		HSD-A3209
	HSD-A1002		HSD-A3201
	HSD-A904	57	HSD-A3200
24	HSD-A1003		HSD-A3100
25	HSD-A1020		HSD-A3300
27	HSD-A3867		HSD-A1005
	HSD-A3866	58	HSD-A32091
29	HSD-A3881		HSD-A90192
31	HSD-A3920		HSD-A9019
33	HSD-A3862		HSD-A90001
35	HSD-A3891	59	HSD-A3101
37	HSD-A3892		HSD-A90002
	HSD-A3893		HSD-A9088
39	HSD-A3897		
41	HSD-A3889		
	HSD-A3888		
43	HSD-A3868		
45	HSD-A3861		

HAIR DRYER

61 HSD-D90288
HSD-D90289
63 HSD-90266
HSD-90266-2
HSD-90266-3
65 HSD-D90267
HSD-D90281
HSD-D90286
HSD-D9029
66 HSD-D90290
HSD-D90291
HSD-D9029-1
HSD-D90297

AUTOMATIC HAND DISINFECTOR

67 HSD-B6000
68 HSD-B8000
HSD-B7000
HSD-B801
HSD-B3000
HSD-B5000
HSD-B2000
69 HSD-F9302

SOAP DISPENSER

73	HSD-F9305	87	HSD-F7016
75	HSD-F9316	89	HSD-F7020
77	HSD-F9309	90	HSD-F7022
79	HSD-F9031	91	HSD-F7019
81	HSD-F9311	93	HSD-F7017
83	HSD-F9303	94	HSD-F9307
86	HSD-F8008		HSD-F9306
	HSD-F8008		HSD-F7007
	HSD-F8009		
	HSD-F8009		
	HSD-F8008		
	HSD-F80013		
	HSD-F80099		
	HSD-F8011		

INSPIRE SERIES

97	HSD-F9088
	HSD-F9088-2
99	HSD-F7002
101	HSD-E51019
103	HSD-E6008

ENDEAVOR SERIES

107	HSD-F9317
109	HSD-F7003
111	HSD-E51027
	HSD-E51020
	HSD-E51022
113	HSD-E6018
	HSD-E6019
115	HSD-E6069

TISSUE BOX

119	HSD-E51013
	HSD-E51015
121	HSD-E51016
123	HSD-E1008
125	HSD-E51021
127	HSD-E51023
129	HSD-E6015
131	HSD-E6012
133	HSD-E6011
135	HSD-E6005
136	HSD-E6006
	HSD-E6007
137	HSD-E6002
139	HSD-E012
	HSD-E51018
	HSD-E011

FOCUS ON COMMERCIAL BATHROOM FOR 20 YEARS

interhasa!





interhasa

Leading brand **of**
intelligent bathroom

Corporate Mission

While pursuing the material and spiritual happiness of all employees, we use technological innovation to make living spaces healthier and more comfortable, and contribute to the progress and development of human society.

Corporate Vision

Create a world-leading brand of commercial sanitary ware, and become a century-old enterprise that brings happiness to employees, touches customers, and respected by the society.

Values

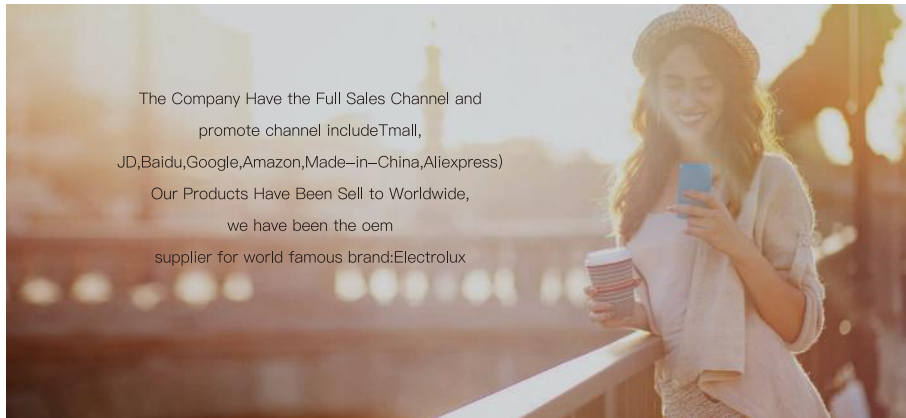
Struggle, honesty, perfection, fraternity, innovation, win-win situation



who we are

Zhejiang Interhasa Intelligent Technology Co.Ltd. is a self-designed professional manufacturer of Commercial bathroom products such as hand dryer, senser faucet, soap dispenser, was established in 2007 tissue dispenser, wall-mounted hair dryer, baby change station etc. It is one of the most powerful commercial bathroom products manufacturer in China.

interhasa is a professional self-designed manufacturer of intelligent products, including hand dryers, soap dispenser, bathroom accessories for more than 20 years. Our products are exported to worldwide. Every interhasa innovation has a single motivation" Providing a smart & comfortable life with art.



The Company Have the Full Sales Channel and promote channel include Tmall, JD, Baidu, Google, Amazon, Made-in-China, Aliexpress)
Our Products Have Been Sell to Worldwide, we have been the oem supplier for world famous brand: Electrolux

Interhasa has been focusing on commercial sanitary ware for 20 years

50+

Sells to more than 50 countries and regions around the world.

Our products are distributed all over the world and we have become a high-quality supplier to the world's top 500 companies such as Electrolux and Metro.

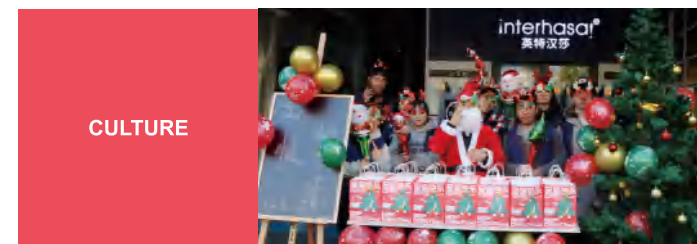


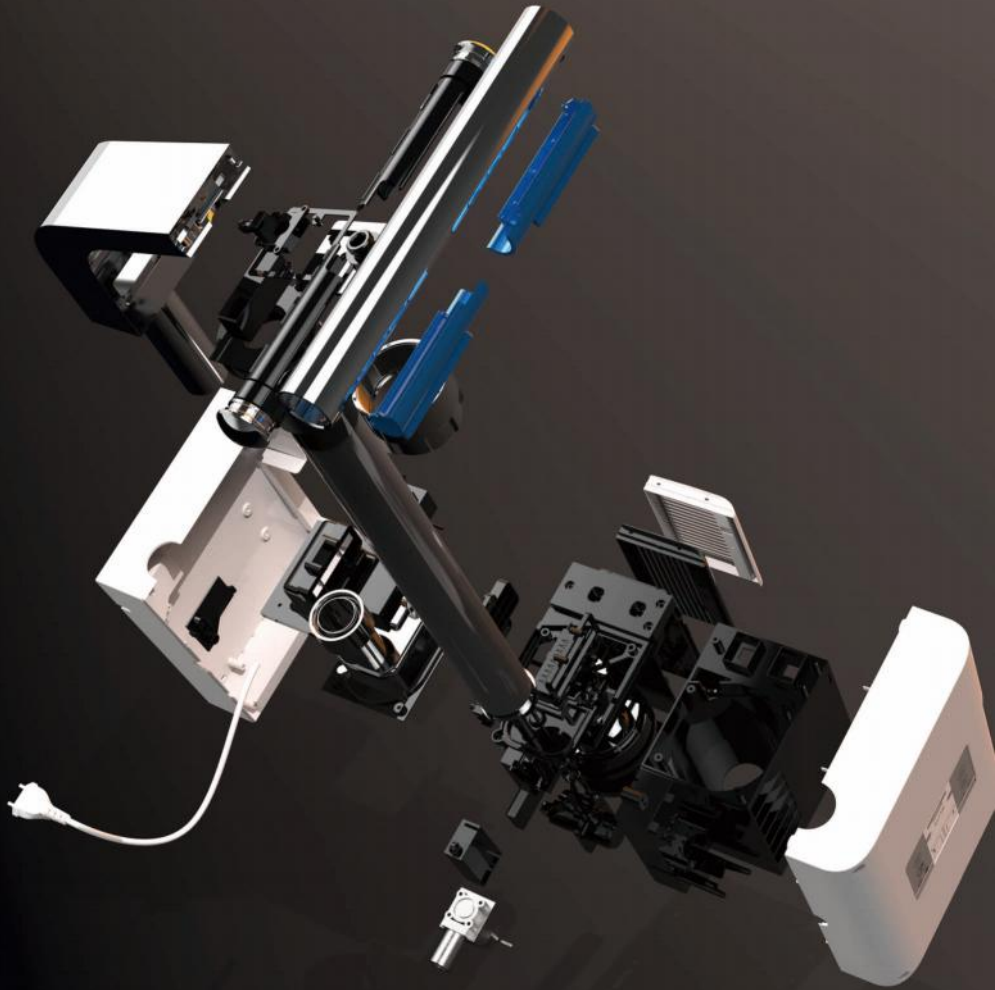
Our sales continue to rise at an annual growth rate of more than 30%. We have a complete sales system and promotion channels.

200+

More than 2 million products installed all over the world every year.

Create the world's leading brand of commercial sanitary ware and become a century-old enterprise that makes employees happy, impresses customers, and respects society.





Quick dry cleaning two-in-one, making washing more convenient. Noise reduction motor, simple and extraordinary, 13-level high-efficiency filter, fine copper faucet. Selected materials, fast drying, anti-corrosion and rust prevention, environmental protection and energy saving. Zero-contact induction switch high-speed brushless motor, sensor-controlled water flow and silent water production. The faucet adopts Newper aerator, and the dimple-shaped design makes the water in the form of foam, the falling water is softened, and the touch is delicate. The honeycomb-shaped water is soft and delicate without splashing.

The golden angle combines science and aesthetics. The scientific water outlet angle "extends" the water outlet distance, and it is more intimate to reach out. The water column of the ordinary faucet with the golden angle is outward, the angle is more reasonable and the water column is vertical, and the distance of the water outlet is short.

HAND WASH/DRY ONE SET FAUCET



HSD-A3871



White Silver Black

Voltage	AC220V 50Hz
Rate Power	1500W
Electric current	5-9A
Electric shock protect	Class II
Protection Level	IPX1
Air Speed	100 M/S
Air Flow	150m ³ /h
Motor speed	42000r/min
Timeout protection	30S
Cover Material	Copper
Net Weight	5.55 KG
Gross Weight	6.66 KG
Quantity/Carton	2 PCS
Product size	28.4*18.3*15.4 CM
Packaging size	37*33*27 CM

HSD-A3873	
Voltage	AC220V 50Hz
Rate Power	1150W
Electric current	5-9A
Electric shock protect	Class II
Water splash protect	IPX1
Air Speed	100 M/S
Air Flow	150m3/h

Motor speed	4200r/min
Timeout protection	30S
Cover Material	Copper
Net Weight	5.55 KG
Gross Weight	6.66 KG
Quantity/Carton	2 PCS
Product size	28.4*18.3*15.4 CM
Packaging size	38*68*28 CM

Water splash protect

HAND WASH DRY ONE SET FAUCET



The HEPA filter in the faucet hand dryer works more efficiently. Isolate up to 99.95% of bacteria-sized particles in the air from the toilet, ensuring that the air for drying hands is clean, not dirty. Zero-contact infrared sensor, it can be opened and closed when you reach out. Infrared induction is suitable for public places, avoid cross-contact contamination, reach out entering the sensing range, the work will be automatically started, and the work will stop when the hand is withdrawn from the sensing area, and the sensing effect is sensitive and durable! The water is automatically discharged in the middle, and the two sides are automatically and strongly air-dried, which does not cause secondary pollution, and is more environmentally friendly without paper. The multi-functional design saves space for installing a large hand dryer, and you can directly dry your hands with clean air while washing your hands.



HSD-K1201



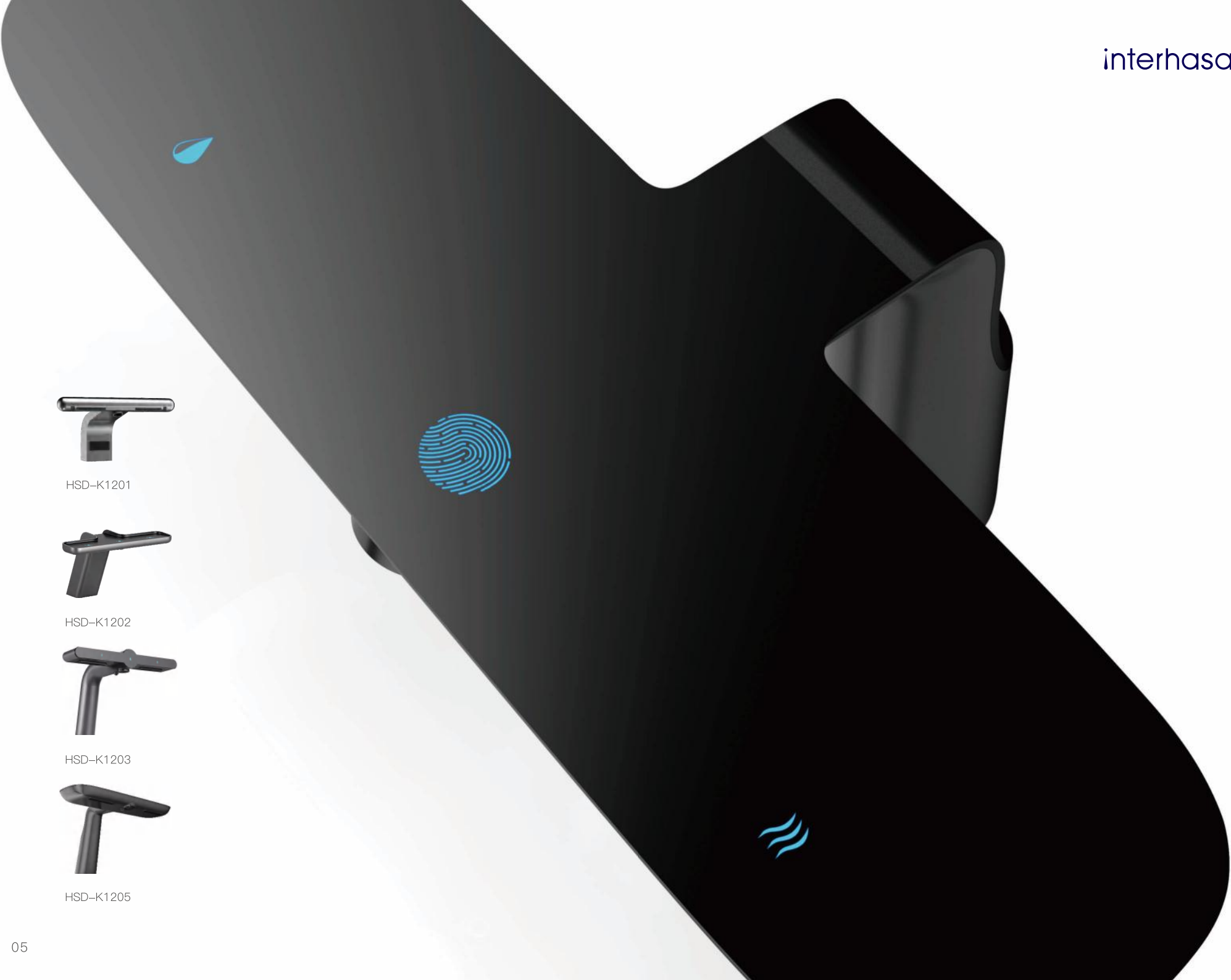
HSD-K1202



HSD-K1203

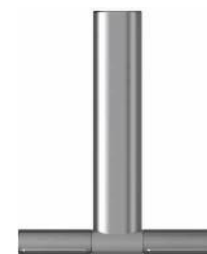
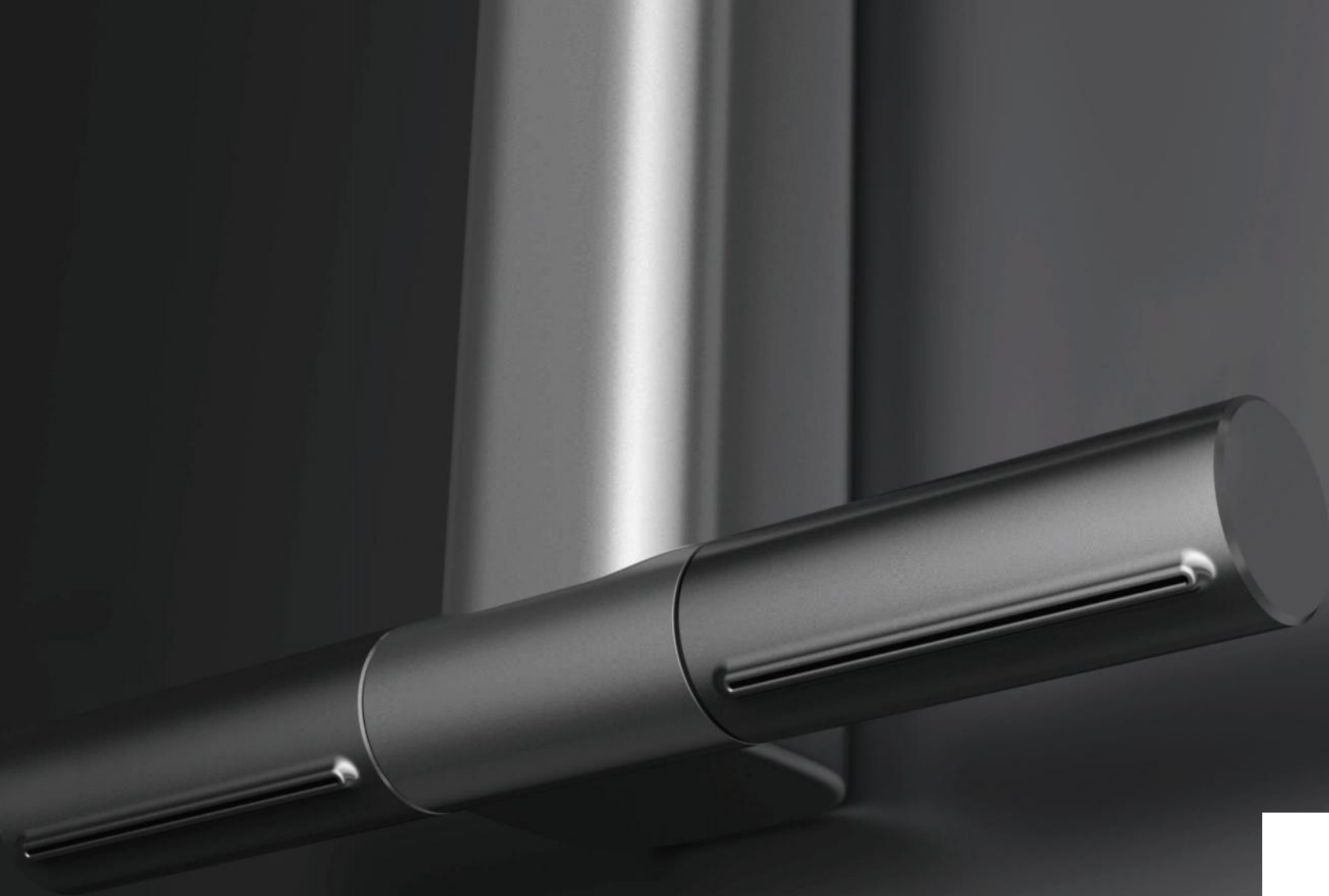


HSD-K1205

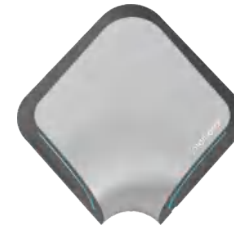




**HIGH SPEED
HAND DRYER**



HSD-A3895



HSD-A3899



Air outlet method	Automatic infrared sensing
Sensing distance	80mm-150mm
Ambient temperature	0-50°
Hand drying time	15-30S
Shell material	ABS
Rated voltage	220V
Rated frequency	50-60Hz
Rated power	1100W
Waterproof grade	IPX4
Wind speed	>60M/S
Wind temperature	45°C
Noise	70-80BB
Motor	3C motor
Motor power	550W
Heating Elements	PTC
Product size	35.7*36.8*15.05 CM
Packaging size	36*37.1*15.35 CM

With the slope, it has a double-sided air outlet covered in the horizontal and longitudinal depth to realize 3D wind out, so that the user's every hand is wrapped in the wind in all directions and completes the hand cleaning at high speed.

Built-in high-quality HEPA filter, which provides purer airflow and prevents dust from entering the machine.

This can ensure the long life of the air-drying mobile phone, effectively filter out odors and impurities in the air, and make the wind safer and more comfortable.

With excellent electronic sensors, users can use this dry mobile phone without touching anything.





The A3898T hand dryer stands out among many hand dryers with its unique and innovative design. It is different from the common form of hand dryers on the market, and cleverly designs the whole into a perfect combination of three cylindrical shapes. This unique shape not only gives the product a fashionable and novel appearance, but also makes it unique among many similar products.

In the selection of product materials, the A3898T hand dryer adopts a careful combination of stainless steel and plastic. The stainless steel material is strong and durable, highlighting the high quality and stability of the product, which can effectively resist wear and corrosion in daily use; while the plastic part has been carefully selected and processed, which not only has excellent texture, but also adds softness and comfort to the product. The combination of this material not only ensures the practicality of the product, but also highlights its differentiation in material selection.



It is worth mentioning that the lighting design of the hand dryer is unique and adopts a hidden design method. When you turn on the hand dryer, the soft light lights up quietly, which not only adds warmth and comfort to the use process, but also visually creates a simple and beautiful effect. This hidden lighting design not only avoids the glaring that may be brought about by direct light, but also makes the appearance of the whole product more concise, smooth and integrated.

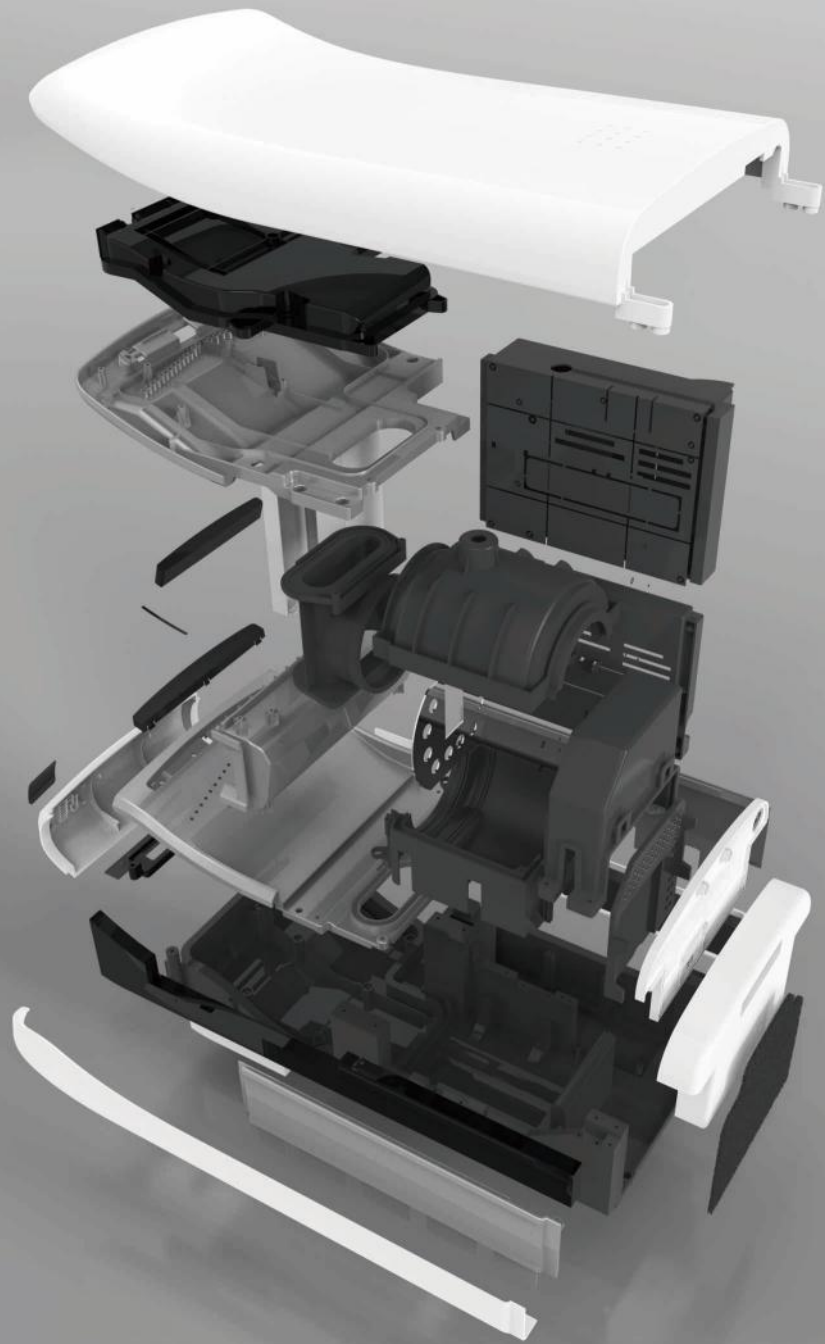


HSD-A3898T



White Silver Black

Voltage	AC220V 50Hz
Rate Power	920W
Electric current	5-9A
Electric shock protect	Class II
Water splash protect	IPX4
Air Speed	80 M/S
Air Flow	150m ³ /h
Motor speed	32000r/min
Cover Material	Stainless steel
Net Weight	4.53 KG
Gross Weight	7.63 KG
Quantity/Carton	2 PCS
Product size	46.8*47.1*12.5 CM
Packaging size	61*51*13 CM



HIGH SPEED
HAND DRYER SERIES



HSD-A1688

Voltage	AC220V 50Hz
Rate Power	1800W
Electric current	5-9A
Electric shock protect	Class II
Water splash protect	IPX1
Air Speed	90 M/S
Air Flow	150m3/h
Motor speed	32000r/min
Cover Material	ABS
Net Weight	8.18 KG
Gross Weight	10.27 KG
Quantity/Carton	2 PCS
Product size	29*21*65 CM
Packaging size	71*36*28 CM



The strong wind speed of 95m/s,5-7 seconds to dry hands interhasa "jet" hand dryer with double dry air jet technology, equipped with high speed brush DC motor. The wind speed reached 95 meters,with warm wind function, can handle the moisture in the dry within 5-7 seconds.No need to rub hand or hand in hand, just put into the hands slowly back.

Unique vertical design, keep the ground dry and clean. interhasa"jet" hand dryer features a new design, to prevent the water drop dirty ground,ensure health.

Introduction to new design,Beautiful,Generous Jet type of dry cell phone use a new design, fashion and beautiful to reveal the simple,Noble and elegant in the creative, interhasa hand dryer meet the specific needs of the health and is a new generation of dry hand in the classic!



HSD-A2688

Voltage	AC220V 50Hz
Rate Power	1800W
Electric current	5-9A
Electric shock protect	Class II
Water splash protect	IPX4
Air Speed	90 M/S
Air Flow	150m3/h
Motor speed	32000r/min
Cover Material	ABS
Net Weight	6.8 KG
Gross Weight	8.45 KG
Quantity/Carton	2 PCS
Product size	30*20*61 CM
Packaging size	67*36*28 CM



The thickness of the whole machine is only 10cm, which greatly breaks through the limitations of the industry on the thickness of the hand dryer, which not only brings a sense of cleanliness to dry hands, but also makes room for the bathroom. The appearance is very minimalist and can be adapted to a variety of scenes. It is designed to be seamlessly hidden behind the cabinet door of the bathroom and can be placed with bathroom items.



HSD-A3886

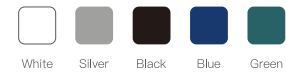
The air nozzle with adjustable angle can be rotated, and the built-in high-quality HEPA filter can be adapted to users of different heights and different special scenarios. It provides a purer airflow and prevents dust from entering the machine.

This can ensure the long life of the air-drying mobile phone, effectively filter out odors and impurities in the air, and make the wind safer and more comfortable.





Constant temperature, no hot feeling for a long time.
 Corrugated heating wire to prevent the heat from being too concentrated.
 The temperature is just right, and it doesn't get hot after blowing for a long time.



HSD-A905

Voltage	AC220V 50Hz
Rate Power	1200W
Water splash protect	IPX4
Air Speed	90 M/S
Cover Material	ABS
Motor speed	2400r/min
Net Weight	1.3 KG
Gross Weight	1.5 KG
Quantity/Carton	8 PCS
Product size	24*23*24 CM
Packaging size	28*27*26.5 CM



HSD-A1001



HSD-A1002



HSD-A904

The strong wind speed of 15m/s,15 seconds to dry hands

interhasa "jet" hand dryer with double dry air jet technology, equipped with high speed brush DC motor, The wind speed reached 15 meters, with warm wind function, can handle the moisture in the dry within 15 seconds, No need to rub hand or hand in hand, just put into the hands slowly back.

Introduction to new design,Beautiful,Generous

Jet type of dry cell phone use a new design, fashion and beautiful to reveal the simple, Noble and elegant in the creative, interhasa hand dryer meet the specific needs of the health and is a new generation of dry hand in the classic!

Unique vertical design, keep the ground dry and clean.

interhasa "jet" hand dryer features a new design, to prevent the water drop dirty ground,ensure health.



HSD-A1003		Motor speed	2400r/min
Voltage	AC110/220V 50/60Hz	Net Weight	
Rate Power	1800W	Gross Weight	
Water splash protect	IPX1	Quantity/Carton	2 PCS
Blowing rate	15 M/S	Product size	24*23*24 CM
Material	ABS	Packaging size	28*27*25.5 CM





Red and blue lights rotate alternately, hot and cold switch.

The upgraded new air outlet dries faster and is more suitable for large shopping malls, airports and other places with high traffic.

Both sides blow air, and the front and rear air volumes are superimposed to form a strong counter current airflow.

This technology can completely dry the surface of hands in 10–15 seconds, using light to control the sensor.

The dryer adopts precision sensor automatic switch.

No touch device required One-piece molding (IPX4 waterproof) alternating red and blue hot and cold switching, removable air filter, clean air, reduce skin contact with dust and bacteria.

HSD-A1020		Motor speed	18000r/min
Voltage	AC110/220V 50/60Hz	Net Weight	
Rate Power	1250W	Gross Weight	
Protection Level	IPX1	Quantity/Carton	2 PCS
Air Speed	30 M/S	Product size	23.3*18.2*28.2 CM
Cover Material	ABS	Packaging size	32*27*22 CM





New features, powerful functions and new experience, small performance steel cannon, less odor, energy saving and low consumption, 10 seconds quick drying, better air volume, instantaneous induction of air, rapid drying, 9 pieces of aluminum fan blade thin air outlet, The wind power is increased by 10%, and the water is quickly stripped. It has strong combat power and is not afraid of high-frequency use. The 1250 W powerful motor is not afraid of it all year round. It is small in size and has strong wind power. It is close to the size of a classic hand dryer, but it has the wind power of a high-speed hand dryer.

Air duct optimization + motor shock absorption, the sound is as low as 65 DB-75 DB, HEPA filter, no peculiar smell before entering the store, intercepting six major dirt, cleaner than expected, PM0.3 warm Hot to the touch, I understand your ideal temperature, as long as the guests need it, I will be surrounded by warmth, 304 stainless, long-term use, as first seen, quality upgrade, not afraid of time challenges, low-carbon new model, only 1 kWh of electricity a day, Calculated based on 200 hand drying times a day, only 1 kWh of electricity is needed, and public places are safer. There is a fixed plate on the back to prevent theft and fall, open the outer cover, and move the outer buckle to the machine, and then the top can be removed.



White Silver Black



HSD-A3867



HSD-A3866 Plastic model

Voltage	AC110/220V 50/60Hz
Rate Power	1250W
Water splash protect	IPX1
Air Speed	90 M/S
Cover Material	ABS/with Activated Carbon Filter
Motor speed	22000r/min
Net Weight	
Gross Weight	
Quantity/Carton	2 PCS
Product size	18.4*16*30.3/30.3*16*18.4 CM
Packaging size	36.5*25*21.5/32*27.5*21 CM





The A3882 hand dryer adopts an advanced touch hot and cold switching design. This design is not only easy to operate, but also allows you to freely switch between cold air and hot air modes according to your needs with a light touch to meet the needs of dry hands in different seasons and personal preferences; and the touch operation panel also has sensitive response speed and precise control performance, bringing you a more convenient and efficient user experience.

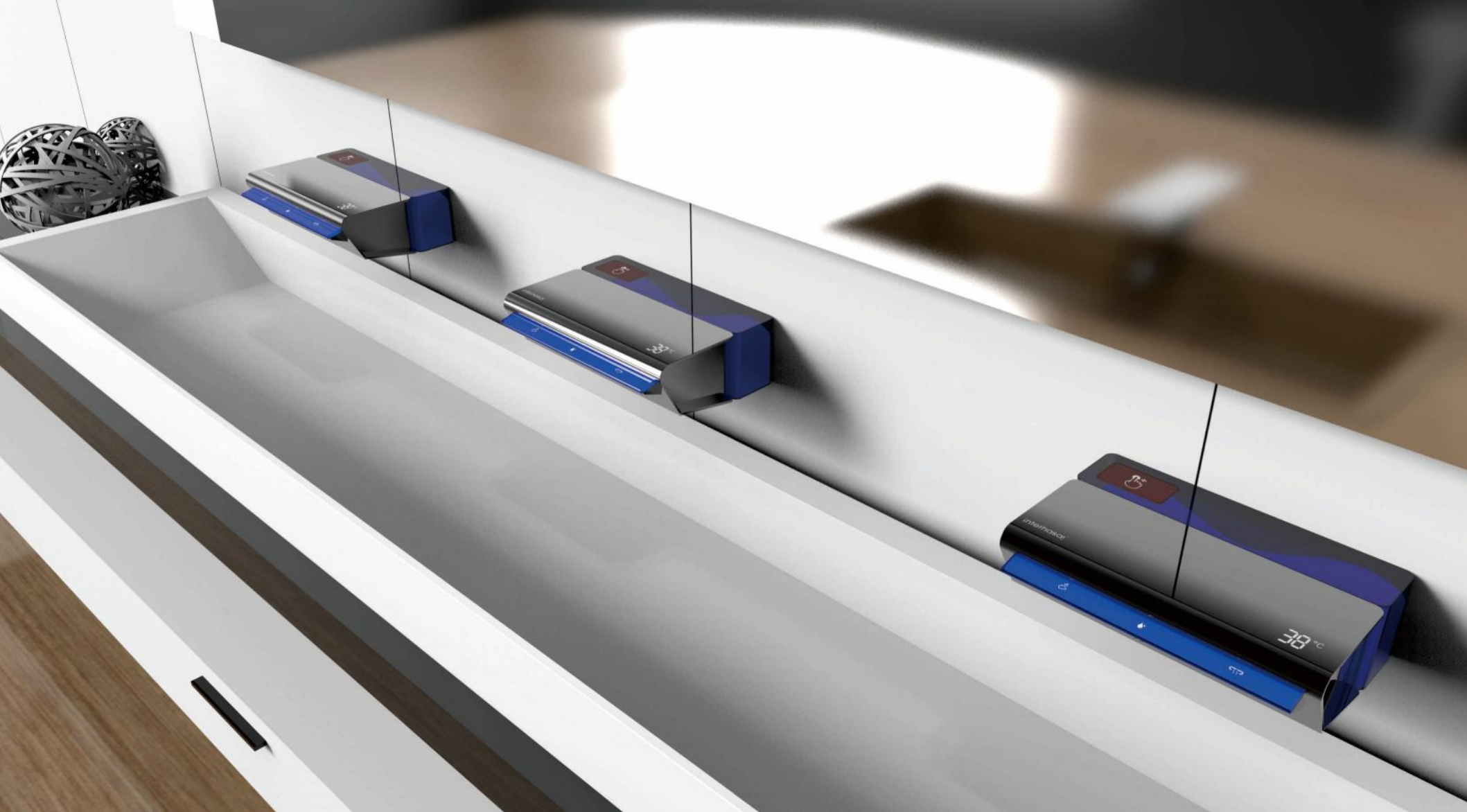


White Silver Black



HSD-A3881

Voltage	AC110/220V 50/60Hz
Rate Power	1100W
Water splash protect	IPX1
Air Speed	90 M/S
Cover Material	ABS
Motor speed	28000r/min
Net Weight	
Gross Weight	
Quantity/Carton	2 PCS
Product size	28.2*18.2*23.3 CM
Packaging size	33.8*28.5*23.6 CM



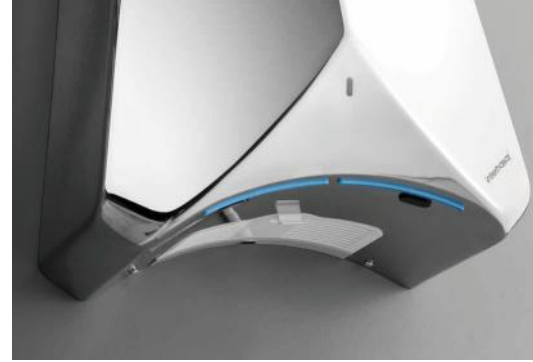
The A3920 intelligent hand dryer brings you a brand new hand drying experience with its excellent performance and innovative design.

This hand dryer is equipped with a large-range display panel that can clearly show the indoor temperature, allowing you to know the temperature condition of the surrounding environment at any time. The rear part of it adopts a visual soap liquid module, making the refilling process more timely and convenient. You can see the usage of soap liquid at a glance to ensure timely replenishment when needed and provide reliable guarantee for your cleaning needs.

After the hand dryer is started, the lighting effect is dazzling. It can display different functions such as air outlet, water outlet, and soap liquid respectively, which not only enhances the integrity of the product but also adds beauty. This unique lighting design makes your use process full of technology and fashion sense.



HSD-A3920



The dryer can meet the special needs of user to health, no touch control, feeling dust should be sensitive, high efficiency particulate air filter to empty, with an infrared safety thermal power motor, with good quality in the market, each other.

high quality The material has good corrosion resistance, corrosion resistance, electrical insulation, inconvenient degumming, easy to install, fast, etc.



HSD-A3862
SS Steel Shell



HSD-A3890
Plastic Shell



White Silver Black

Voltage	AC220V 50Hz
Rate Power	1100W
Water splash protect	IPX1
Air Speed	95 M/S
Cover Material	Stainless steel/ABS
Motor speed	28000r/min
Net Weight	4.5 KG
Gross Weight	5.13 KG
Quantity/Carton	4 PCS
Product size	33.5*28.5*18.5 CM
Packaging size	37*33*23.5 CM



HSD-A3891



Voltage	AC220V 50Hz
Rate Power	1100W
Electric current	5-9A
Electric shock protect	Class II
Water splash protect	IPX4
Air Speed	80 M/S
Air Flow	150m3/h
Motor speed	32000r/min
Cover Material	Stainless steel
Net Weight	4.67 KG
Gross Weight	5.35 KG
Quantity/Carton	2 PCS
Product size	30.2*33.8*17.7 CM
Packaging size	30.5*34.1*18 CM

Compared with traditional hand dryers, the lengthened air outlet can touch the hand in a larger area, ensuring that every corner of the hand can be quickly covered by the warm wind, which greatly shortens the time required to dry the hand.

In-depth study of the principles of ergonomics, and fully consider the natural form and movement habits of people's hands when drying hands. The arc design can perfectly fit the state of dry hands, so that every wisp of wind can accurately blow to the hands, bringing users a more comfortable and efficient dry hand experience.





The strong wind speed of 80m/s, 8-12 seconds to dry hands interhasa "jet" hand dryer with double dry air jet technology, equipped with high speed brush DC motor, The wind speed reached 80 meters, with warm wind function, can handle the moisture in the dry within 8-12 seconds, No need to rub hand or hand in hand, just put into the hands slowly back.

Unique vertical design, keep the ground dry and clean. interhasa "jet" hand dryer features a new design, to prevent the water drop dirty ground, ensure health.

Introduction to new design, Beautiful, Generous Jet type of dry cell phone use a new design, fashion and beautiful to reveal the simple, Noble and elegant in the creative, interhasa hand dryer meet the specific needs of the health and is a new generation of dry hand in the classic!



Voltage	AC220V 50Hz
Rate Power	1250W
Water splash protect	IPX1
Air Speed	95 M/S
Cover Material	Stainless steel
Motor speed	22000r/min
Net Weight	3.6 KG
Gross Weight	4.2 KG
Quantity/ Carton	4 PCS
Product size	18.4*30.3*16 / 26.3*21.2*16CM
Packaging size	36.5*25*21.5/32*27.5*21 CM



HSD-A3892



HSD-A3893



Blade shape
Compressed air



The wind outlet bends inward
Concentrated airflow



Double overlapping wind
Peel off the water

Shaped like a shield, it is no longer "face-blind" to reject the stereotyped shape of the hand dryer on the market. 100 people dry hands, only 0.6 kWh of electricity, only a few cents per day, and the cost is lower than the toilet paper. Mirror stainless steel, the surface is like a mirror, 304 mirror stainless steel, high-definition flat like a mirror, the process is complicated and the cost is higher, and it can be wiped without leaving dust.



HSD-A3897



Voltage	AC220V 50Hz
Rate Power	1100W
Water splash protect	IPX1
Air Speed	90 M/S
Cover Material	304 Stainless Steel / with HEPA filter
Motor speed	28000r/min
Net Weight	4.5 KG
Gross Weight	5.13 KG
Quantity/Carton	4 PCS
Product size	33.2*28.5*19 CM
Packaging size	37*33*23.5 CM

INTERHASA
INTELLIGENT TECHNOLOGY

This dryer can meet the special needs of health to users, no touch control. The induction is sensitive. Particulate high efficiency air filter. with an thermal infrared safety powerful motor, Make it top quality in the market The high quality stainless steel material has good corrosion resistance, electrical insulation advantages.



HIGH SPEED HAND DRYER SERIES

Voltage	AC220V 50Hz
Rate Power	1250W
Water splash protect	IPX1
Air Speed	95 M/S
Cover Material	Stainless steel
Net Weight	17.8 KG
Gross Weight	18.8 KG
Quantity/ Carton	2 PCS
Product size	24.5*15.5*46.5 CM
Packaging size	51.6*29.4*20.9 CM



HSD-A3889



HSD-A3888





The strong wind speed of 80 m/s, 10 seconds to dry hands. the hand dryer adopts double air injection technology, equipped with high speed brushless dc motor, speed up to 95 meters per second, with functions of warm wind, can be in dealing with dry hands of water for 10 seconds, without hands rub each other, simply remove hand in slow.



White Silver Black

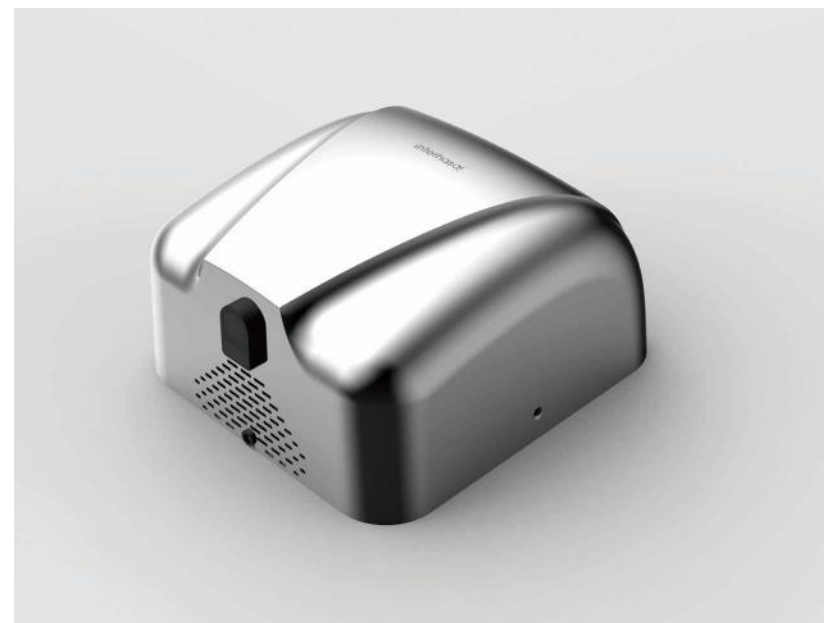
HSD-A3868		Motor speed	25000r/min
Voltage	AC110/220V 50/60Hz	Net Weight	4.5 KG
Rate Power	1250W	Gross Weight	5.13 KG
Protection Level	IPX1	Quantity/Carton	2 PCS
Air Speed	95 M/S	Product size	24.5*15.5*25 CM
Cover Material	ABS	Packaging size	29*29*21 CM



HSD-A3861		Motor speed	25000r/min
Voltage	AC110/220V 50/60Hz	Net Weight	4.5 KG
Rate Power	1250W	Gross Weight	5.13 KG
Protection Level	IPX1	Quantity/Carton	2 PCS
Air Speed	100 M/S	Product size	25*16.5*24.5 CM
Cover Material	ABS	Packaging size	34*33*25 CM

High-quality materials have good corrosion resistance, electrical insulation, inconvenient degumming, easy installation, and light resistance.





HIGH SPEED HAND DRYER SERIES

INTERHASA
INTELLIGENT TECHNOLOGY



HSD-A90005



White Silver Black

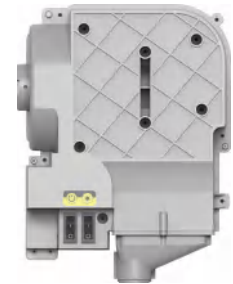
Voltage	AC220V 50Hz
Rate Power	1800W
Water splash protect	IPX1
Air Speed	95 M/S
Cover Material	Stainless steel
Net Weight	4.5 KG
Gross Weight	5.13 KG
Quantity/Carton	2 PCS
Product size	29*17*32 CM
Packaging size	37*33*23.5 CM



HIGH SPEED HAND DRYER SERIES



Voltage	AC110/220V 50/60Hz
Rate Power	1200W
Water splash protect	IPX1
Air Speed	60 M/S
Cover Material	ABS
Net Weight	4.5 KG
Gross Weight	5.13 KG
Quantity/Carton	2 PCS
Product size	21.5*27.5*11.8 CM
Packaging size	33*28.5*18 CM



HSD-A3880



Elegant and simple appearance, showing a different fashion atmosphere. more comfortable experience, unimaginable use experience and more security, selected abs material, light, tough, wear-resistant and durable. hot and cold switch, adjust the hot and cold air according to the weather.

ultra-thin model with a thickness of only about 115mm, suitable for multi-functional cabinets. compatible with all kinds of places, suitable for all kinds of office buildings, hotels, schools, airports and other places, all kinds of comfortable experience.



Triple basin hand dryer. The product integrates the functions of hand drying, liquid discharge and water discharge, making it easier for users to clean their hands. We use a new structure, so that the water can be dispersed to most of the corners of the basin like a waterfall, so that the water can touch the hand area in a larger area, making the hands cleaner. We adopt a more technological design and a more human-machine processing method for the foam.

HSD-A90001		Motor speed	28000r/min
Voltage	AC220V 50Hz	Net Weight	4.9 KG
Rate Power	1800W	Gross Weight	5.5 KG
Protection Level	IPX1	Quantity/Carton	4 PCS
Air Speed	95 M/S	Product size	32*29*17 CM
Cover Material	Stainless steel	Packaging size	36.5*21.5*36.5 CM



HSD-A3885

The foam head adopts the telescopic mode. When the user uses it, the soap tip is stretched out and sprayed on the user's hand, so that the user and the product are linked. In the hand drying area, we use the four-way air outlet method, so that users can dry their hands as long as they stretch out their hands, without moving their hands, so as to achieve the purpose of all-round hand drying.

INTERHASA
INTELLIGENT TECHNOLOGY

It integrates the functions of hand drying, water and soap, providing users with a one-stop solution from hand washing to drying.

This hand dryer innovatively combines the hand dryer directly with ceramics.

This unique design concept greatly improves the integrity and aesthetics of the product.

The delicate texture of ceramic material complements the modern sense of technology of the hand dryer, making it not only a practical household item, but also an ornament that can add an artistic atmosphere to the space.



www.interhasa.com



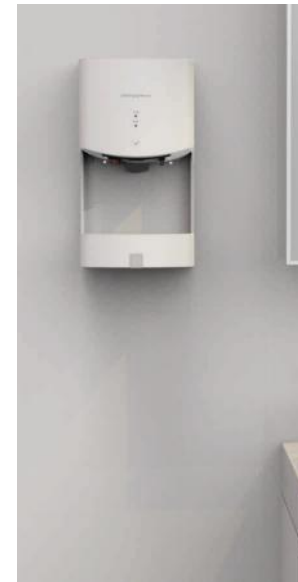
HSD-A3900



HSD-H0018

A hand dryer water catcher,
The arc design is used on the top of the water tray,
in order to let the water flow into the water filter hole area during use,
and prevent the ground from getting wet when drying hands.
The bottom of the contact plate is made of transparent material,
which can prompt the staff to clean up in time when the
water in the water plate is almost full.
The overall shape of the water tray adopts a simple semi-circular design.
The simple shape is suitable for most of the existing hand dryers,
showing that simplicity is not a whole.

INTERHASA HAND DRYER



HSD-A9025

Voltage 110~220V(50Hz~60Hz)
Rated power 1650W
Dry hands time 7~9s
Air speed >90m/s
Water splash proof Ipx4
Product size 300mmx220mmx680mm
Quantity packing 100 units/box

White Silver Black



HSD-A3800

Voltage 110~220V(50Hz~60Hz)
Rated power 1250W
Dry hands time 8~12s
Air speed >80m/s
Water splash proof Ipx4
Product size 250mmx165mmx470mm
Quantity packing 100 units/box

White Silver Black



HSD-A3209

Voltage 110~220V(50Hz~60Hz)
Rated power 1250W
Dry hands time 8~12s
Air speed >80m/s
Water splash proof Ipx4
Product size 248mmx172mmx520mm
Quantity packing 100 units/box

White Silver Black



HSD-A3201

Voltage 110~220V(50Hz~60Hz)
Rated power 1250W
Dry hands time 8~12s
Air speed >80m/s
Water splash proof Ipx4
Product size 248mmx165mmx470mm
Quantity packing 100 units/box

White Silver Black



HSD-A3200

Voltage 110-220V(50Hz-60Hz)
 Rated power 1250W
 Dry hands time 8-12s
 Air speed >80m/s
 Water splash proof Ipx4
 Product size 248mmx165mmx470mm
 Quantity packing 100 units/box

White Silver Black



HSD-A3100

Voltage 110-220V(50Hz-60Hz)
 Rated power 1250W
 Dry hands time 8-12s
 Air speed >80m/s
 Water splash proof Ipx4
 Product size 240mmx165mmx240mm
 Quantity packing 100 units/box

White Silver Black



HSD-A3300

Voltage 110-220V(50Hz-60Hz)
 Rated power 1250W
 Dry hands time 8-12s
 Air speed >80m/s
 Water splash proof Ipx4
 Product size 240mmx170mmx250mm
 Quantity packing 100 units/box

White Silver Black



HSD-A1005

Voltage 110-220V(50Hz-60Hz)
 Rated power 800W
 Dry hands time 15s
 Air speed >15m/s
 Water splash proof Ipx4
 Product size 150mmx140mmx210mm
 Quantity packing 100 units/box

White Silver Black



HSD-A32091

Voltage 110-220V(50Hz-60Hz)
 Rated power 1250W
 Dry hands time 8-12s
 Air speed >80m/s
 Water splash proof Ipx4
 Product size 255mmx175mmx270mm
 Quantity packing 100 units/box

White Silver Black



HSD-A90192

Voltage 110-220V(50Hz-60Hz)
 Rated power 2300W
 Dry hands time 8-12s
 Air speed >80m/s
 Water splash proof Ipx4
 Product size 230mmx170mmx262mm
 Quantity packing 100 units/box

White Silver Black



HSD-A9019

Voltage 110-220V(50Hz-60Hz)
 Rated power 2300W
 Dry hands time 8-12s
 Air speed >80m/s
 Water splash proof Ipx4
 Product size 230mmx170mmx262mm
 Quantity packing 100 units/box

White Silver Black



HSD-A90001

Voltage 110-220V(50Hz-60Hz)
 Rated power 1800W
 Dry hands time 5-7s
 Air speed >95m/s
 Water splash proof Ipx4
 Product size 290mmx170mmx320mm
 Quantity packing 100 units/box

White Silver Black



HSD-A3101

Voltage	110-220V(50Hz-60Hz)
Rated power	1250W
Dry hands time	8-12s
Air speed	>80m/s
Water splash proof	IpX4
Product size	240mmx165mmx240mm
Quantity packing	100 units/box
	<input type="checkbox"/> White <input type="checkbox"/> Silver <input type="checkbox"/> Black



HSD-A90002

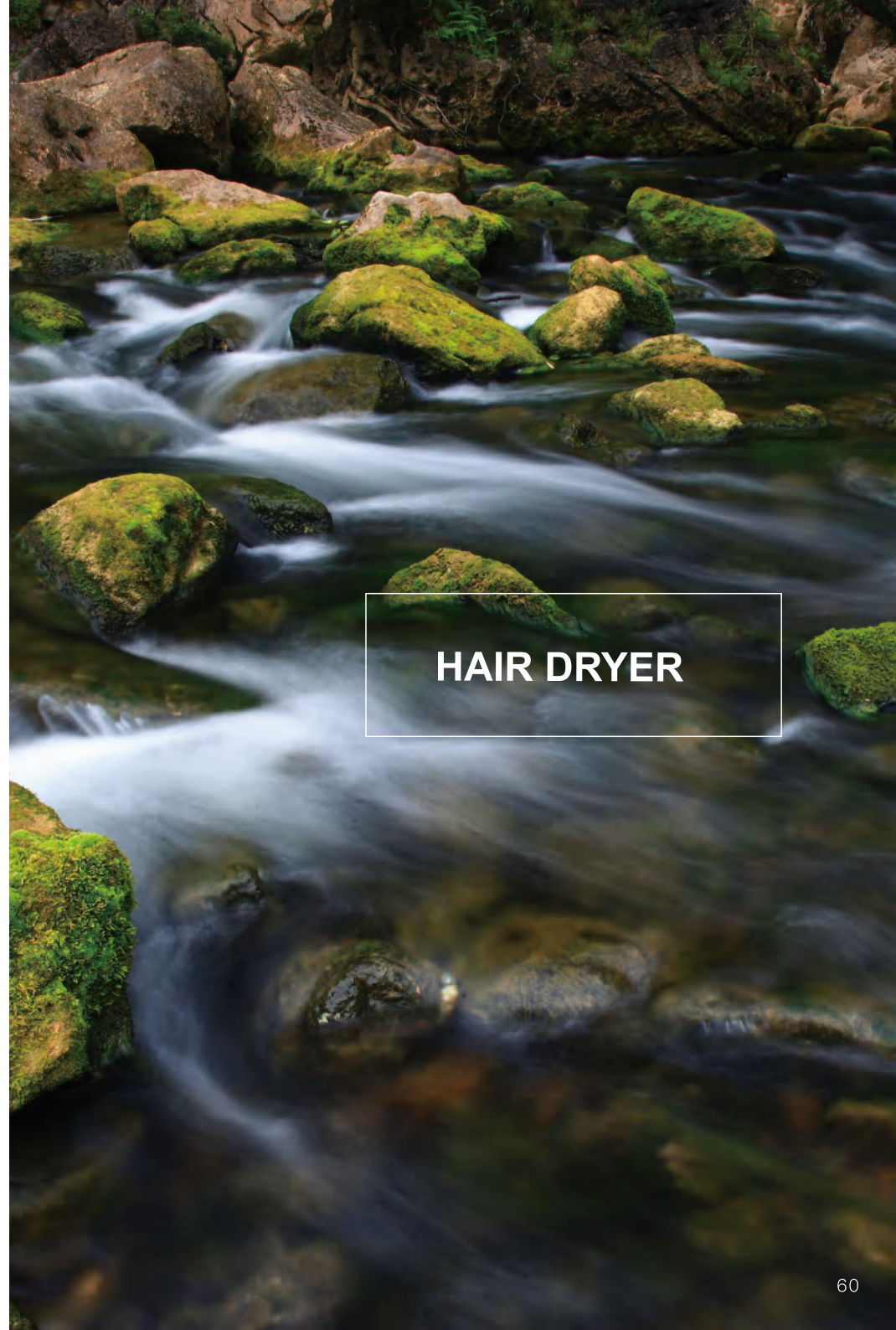
Voltage	110-220V(50Hz-60Hz)
Rated power	1800W
Dry hands time	5-7s
Air speed	>95m/s
Water splash proof	IpX4
Product size	290mmx170mmx320mm
Quantity packing	100 units/box
	<input type="checkbox"/> White <input type="checkbox"/> Silver <input type="checkbox"/> Black



HSD-A9088

Voltage	110-220V(50Hz-60Hz)
Rated power	1800W
Dry hands time	15s
Air speed	>15m/s
Water splash proof	IpX4
Product size	250mmx110mmx300mm
Quantity packing	100 units/box
	<input type="checkbox"/> White <input type="checkbox"/> Silver <input type="checkbox"/> Black

INTERHASA
INTELLIGENT TECHNOLOGY



HAIR DRYER



Feature

1. Made of imported plastic material, it is not easy to be deformed by overheating.
2. Hot and cold air settings, any choice.
3. The handle is set with a micro switch button, lift the handle to work, and release the power button to stop working.
4. Quiet design, beautiful and exquisite, especially energy saving.
5. Dual power protection to prevent overheating.
6. Sturdy suspension safety support, sturdy and durable.

Luxurious and beautiful, fashionable, high-quality, safe and reliable. It can be used as desiccant after shampoo, the wind is gentle, and it will not affect the quality of the hair. It is the first holy grail of bathrooms, a must for star-rated hotels. The centrifugal power system of the centrifugal four-blade fan is large in size, which makes the wind field more uniform and effectively reduces noise interference. Select high-quality materials, which have corrosion resistance, oil resistance, wear resistance, wear resistance increase the service life of the product, and are environmentally friendly.



HSD-D90288

HSD-D90289

Voltage	110-220V(50Hz-60Hz)
Rated power	1200W
Air speed	>11m/s
Water splash proof	IPX1
Temperature	65+-15°C
Quantity packing	100 units/box

www.interhasa.com



AC

Imported AC motor



Centrifugal four-leaf fan



Wave heating network

CQC

CQC Certified Temperature Control Component

HAIR DRYER



HSD-90266



HSD-90266-2



HSD-90266-3

HSD-D90267

Voltage 110-220V(50Hz-60Hz)
 Rated power 1200W
 Air speed >11m/s
 Water splash proof Ipx1
 Product size W285mmxD220mmxH120mm
 Quantity packing 100 units/box



HSD-D90291

Voltage 110-220V(50Hz-60Hz)
 Rated power 1200W
 Air speed >11m/s
 Water splash proof Ipx1
 Product size W285mmxD220mmxH120mm
 Quantity packing 100 units/box



HSD-D90286

Voltage 110-220V(50Hz-60Hz)
 Rated power 1200W
 Air speed >11m/s
 Water splash proof Ipx1
 Product size W350mmxD255mmxH305mm
 Quantity packing 100 units/box



HSD-D9029-1

Voltage 110-220V(50Hz-60Hz)
 Rated power 1200W
 Air speed >11m/s
 Water splash proof Ipx1
 Product size W250mmxD120mmxH240mm
 Quantity packing 100 units/box



HSD-D9029

Voltage 110-220V(50Hz-60Hz)
 Rated power 1200W
 Air speed >11m/s
 Water splash proof Ipx1
 Product size W250mmxD120mmxH240mm
 Quantity packing 100 units/box



HSD-D90297

Voltage 110-220V(50Hz-60Hz)
 Rated power 1200W
 Air speed >11m/s
 Water splash proof Ipx1
 Product size W240mmxD195mmxH205mm
 Quantity packing 100 units/box



HSD-D90290

Voltage 110-220V(50Hz-60Hz)
 Rated power 1200W
 Air speed >11m/s
 Water splash proof Ipx1
 Product size W300mmxD120mmxH150mm
 Quantity packing 100 units/box



AUTOMATIC HAND DISINFECTOR

Hand sanitizer dispenser design instruction

Easy to enjoy sterilization, simple and extraordinary.
Hand sanitizers make hand sanitizer less cumbersome.
Create a healthy hand sanitizer for you.

Six core functions, shorten the disinfection time, intelligent induction,
quantitative spray, fast hand cleaning, large capacity.
Easy to maintain ABS material, persistent pursuit of quality.
Smarter sensing technology, new smart chips, zero-touch disinfection experience,
and convenience brought by technology.



HSD-B6000



HSD-B8000



HSD-B7000



HSD-B801



HSD-B3000



HSD-B5000



HSD-B2000



HSD-F9302



A photograph of tall grasses with feathery seed heads against a sunset sky over the ocean. The grasses are in the foreground, and the ocean is in the background. The sky is a mix of blue, purple, and orange. The text "SOAP DISPENSER" is overlaid on the right side of the image.

SOAP DISPENSER



SOAP DISPENSER
SERIES

HSD-F9305





The lock switch is not afraid of being stolen in public places. The transparent window can know the amount of liquid at any time, and the power switch can be replenished in time. It can be turned off when not in use, effectively saving electricity.

Sensing type	infrared sensing
Liquid type	Liquid/Gel
Sensing distance	0-60mm
Installation method	punch-free/punch installation
Liquid output	0.8ML/time
Total capacity	1000ML
Ambient temperature	0-50°C
Shell material	ABS
Rated voltage	6V
Battery	4pcs No.5 batteries
Product life	≥100000 times
Product size	18.3*13*10cm
Product net weight	463.4g
Packaging size	19.4*13.6*10.6cm
Waterproof grade	IPX1
Certification standard	CE
Implementation standard	GBT 1560-2017 Bathroom accessories



HSD-F9316





SOAP DISPENSER SERIES

HSD-F9309

Interval sensing	0.25s
Sensing type	Infrared sensing
Liquid type	Foam hand soap
Sensing distance	30-50mm
Installation method	Punch-free/punch installation
Liquid output	0.9ML/time
Total capacity	300ML
Ambient temperature	5-40°C
Shell material	ABS/PC
Power	3W
Battery	4pcs C type batteries
Product life	≥100000 times
Product size	12.6*13.1*28.8cm
Product net weight	838g
Packaging size	13.6*13.7*28.8cm
Waterproof grade	IPX1
Certification standard	CE
Implementation standard	QBT 1560-2017 Bathroom accessories





HSD-F9031





HSD-F9311



Hand out of the bubble
Don't wait to wash your hands



300ml

HSD-F9303



500ml

HSD-F9303





HSD-F8008



HSD-F8008



HSD-F8009



HSD-F8009



HSD-F8008



HSD-F80013



HSD-F80099



HSD-F8011



SOAP DISPENSER
SERIES



HSD-F7016



HSD-F7016-2



HSD-F7016-3



HSD-F7016



HSD-F7016



HSD-F7016





HSD-F7022



HSD-F7022-2



HSD-F7022-3



HSD-F7022



HSD-F7022



HSD-F7022



HSD-F7020



HSD-F7020-2



HSD-F7020-3



HSD-F7020



HSD-F7020





HSD-F7019



HSD-F7019-2



HSD-F7019-3





SOAP DISPENSER
SERIES



HSD-F9307



HSD-F9306



HSD-F7017



HSD-F7017



HSD-F7007



HSD-F7007-2



HSD-F7001



HSD-F7001-2



HSD-F7017



HSD-F7017-2



HSD-F7017



HSD-F7017-2



HSD-F7007



HSD-F7007-2



HSD-F7001



HSD-F7001-2



INSPIRE SERIES

INTERHASA
INTELLIGENT TECHNOLOGY



HSD-F9088



HSD-F9088-2



White Black

Product	Manual Soap Dispenser
Liquid Volume	0.8~1.5ml per time
Capacity	800ml/1000ml
Material	ABS
Material-out Mode	Liquid / Gel
Product Size	11.7*11.9*23.2cm/14.5*9.5*24cm
Packaging size	12.3*12.2*23.5cm

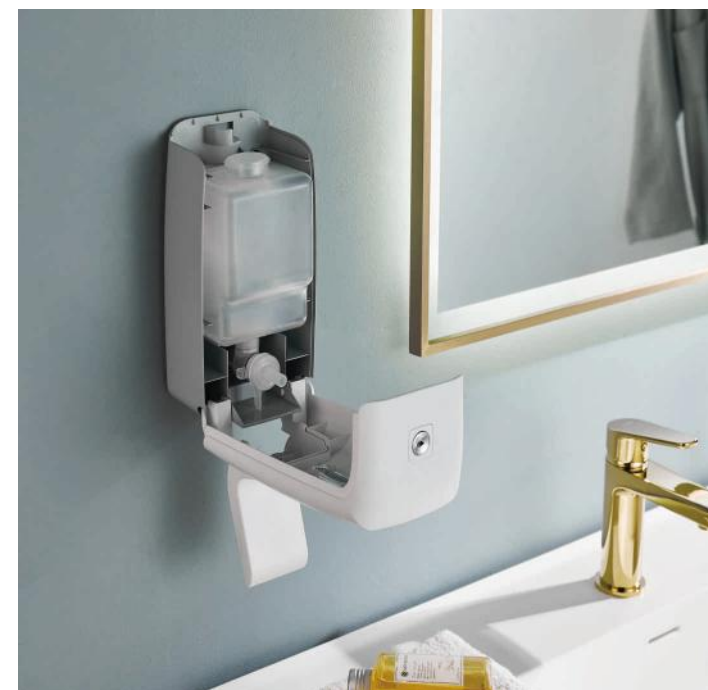


Break the traditional design
not only interesting but also health



HSD-F7002

Product	Manual Soap Dispenser
Liquid Volume	0.8-1.5ml per time
Capacity	800ml
Material	ABS
Material-out Mode	Liquid / Gel
Product Size	18.5*11.9*23.2cm
Packaging size	21*12.5*23.8cm





HSD-E51019



White Silver Black

Cover material	ABS
Transparent cover material	ABS transparent
Base material	ABS
Product size	29.2*13.5*29.2cm
Product net weight	1kg
Product gross weight	1.1kg
Packaging size	29.7*14.1*30cm





Cover material	ABS
Transparent cover material	ABS transparent
Base material	ABS
Product size	27.6*9.3*21cm
Product net weight	0.80kg
Product gross weight	1kg
Packaging size	28.4*10.1*21.8cm



INTERHASA
INTELLIGENT TECHNOLOGY



HSD-E6008

ENDEAVOR SERIES





HSD-F9317

Sensing type	Infrared sensing
Liquid type	Foam hand soap
Sensing distance	30-50mm
Installation method	Punch-free/punch installation
Liquid output	0.9ML/time
Total capacity	300ML
Ambient temperature	5-40°C
Shell material	ABS/PC
Power	3W
Battery	4pcs C type batteries
Product life	≥100000 times
Waterproof grade	IPX1
Certification standard	CE
Implementation standard	QBT 1560-2017 Bathroom accessories

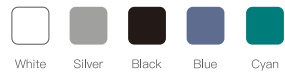


The foam is fast in 0.25s, and the foam is dense and easy to rinse, like ice cream, which can deeply clean every inch of skin. Large capacity, no need to add liquid frequently, 1.5ml of bubbles are produced at a time, and the battery life is 6 months without perforation. Rapid induction and free liquid change.

Sensing type	Manual soap dispenser
Liquid type	Foam hand soap
Installation method	Punch-free/punch installation
Total capacity	300ML
Ambient temperature	4-40°C
Shell material	ABS/PC
Power	3W
Battery	4pcs C type batteries
Product life	≥100000 times
Waterproof grade	IPX1
Certification standard	CE
Implementation standard	QBT 1560-2017 Bathroom accessories



HSD-F7003





HSD-E51027



HSD-E51020



HSD-E51022



Cover material	ABS
Transparent cover material	ABS transparent
Base material	ABS



Select high-quality materials, with high waterproof and splash-proof design, even if water splashes on the product, the interior will not be wet. It is also safe to place it in the bathing area. The design increases the table button switch, and the anti-theft is no longer worried. The use of ABS raw materials is safe and hygienic, with good chemical properties, high temperature resistance, hard, not easy to break, not deformed, and can provide us with the best products.



HSD-E6018



HSD-E6019



Cover material	ABS
Transparent cover material	ABS transparent
Base material	ABS
Product size	30.5*30.3*9.7cm

INTERHASA
INTELLIGENT TECHNOLOGY

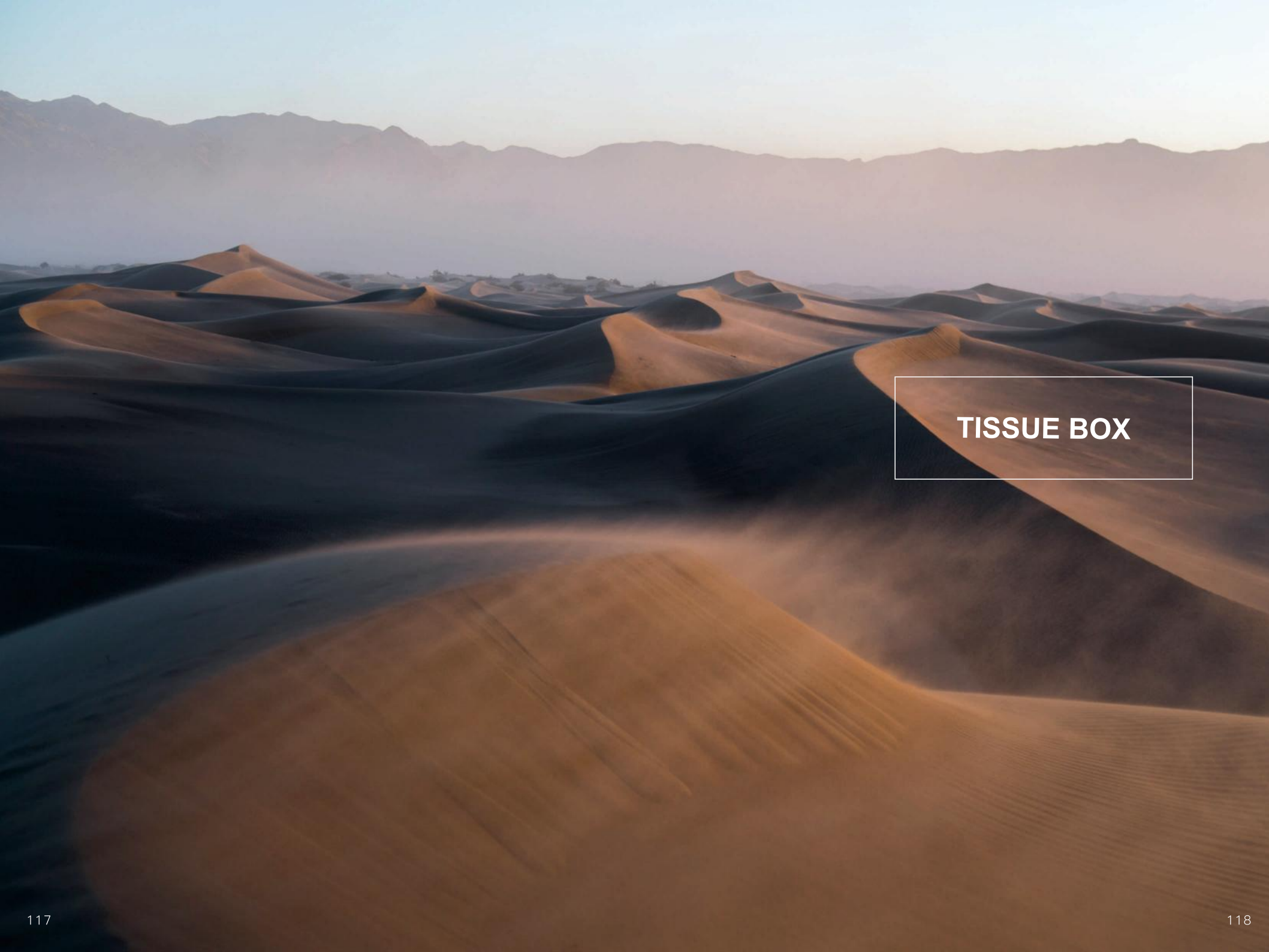


HSD-E6069



Product aesthetic art of line feeling,
Rich color, delicate rounded to avoid hand scratch,
more safe to use.

Cover material	ABS
Transparent cover material	ABS transparent
Base material	ABS
Product size	42.3*31.3*6.07cm



TISSUE BOX



interhasai

Select high-quality materials, with high waterproof and splash-proof design, even if water splashes on the product, the interior will not be wet. It is also safe to place it in the bathing area. The design increases the table button switch, and the anti-theft is no longer worried. The use of ABS raw materials is safe and hygienic, with good chemical properties, high temperature resistance, hard, not easy to break, not deformed, and can provide us with the best products.

TISSUE BOX SERIES



HSD-E51013



HSD-E51015



HSD-E51016

Select high-quality materials, with high waterproof and splash-proof design, even if water splashes on the product, the interior will not be wet. It is also safe to place it in the bathing area.

The design increases the table button switch, and the anti-theft is no longer worried. The use of ABS raw materials is safe and hygienic, with good chemical properties, high temperature resistance, hard, not easy to break, not deformed, and can provide us with the best products.



HSD-E1008



HSD-E1008



HSD-E1008



HSD-E1008

INTERHASA
INTELLIGENT TECHNOLOGY





Select high-quality materials, with high waterproof and splash-proof design, even if water splashes on the product, the interior will not be wet. It is also safe to place it in the bathing area. The design increases the table button switch, and the anti-theft is no longer worried. The use of ABS raw materials is safe and hygienic, with good chemical properties, high temperature resistance, hard, not easy to break, not deformed, and can provide us with the best products.



interhasa!

Cover material	ABS
Transparent cover material	ABS transparent
Base material	ABS
Product size	27*12.5*29cm
Product net weight	0.7kg
Product gross weight	0.9kg
Applicable tissue size	Z fold tissue; 150mm≤length/width≤240mm

HSD-E51021

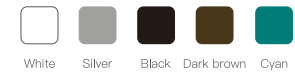




INTERHASA
INTELLIGENT TECHNOLOGY



HSD-E51023



White Silver Black Dark brown Cyan

Cover material	ABS
Transparent cover material	ABS transparent
Base material	ABS
Product size	27.5*27.5*12.5cm
Packaging size	28.2*13.5*28.2cm

TISSUE BOX SERIES



White Silver Black



HSD-E6015

Cover material	ABS
Transparent cover material	ABS transparent
Base material	ABS
Product size	27.8*10.2*21.5cm
Product net weight	0.47kg
Product gross weight	0.62kg
Packaging size	28.6*10.7*22.2cm



Select high-quality materials, with high waterproof and splash-proof design, even if water splashes on the product, the interior will not be wet. It is also safe to place it in the bathing area. The design increases the table button switch, and the anti-theft is no longer worried. The use of ABS raw materials is safe and hygienic, with good chemical properties, high temperature resistance, hard, not easy to break, not deformed, and can provide us with the best products.





Product aesthetic art of line feeling,
Rich color, delicate rounded to avoid hand scratch, more safe to use.



HSD-E6012



Cover material	ABS
Transparent cover material	ABS transparent
Base material	ABS
Product size	27*9.5*20.5cm
Product net weight	0.58kg
Product gross weight	0.75kg
Packaging size	28*10*21.5mm



Select high-quality materials, with high waterproof and splash-proof design, even if water splashes on the product, the interior will not be wet. It is also safe to place it in the bathing area. The design increases the table button switch, and the anti-theft is no longer worried. The use of ABS raw materials is safe and hygienic, with good chemical properties, high temperature resistance, hard, not easy to break, not deformed, and can provide us with the best products.

HSD-E6011





HSD-E6005



HSD-E6005



HSD-E6005



HSD-E6006



HSD-E6006



HSD-E6006



HSD-E6007



HSD-E6007



HSD-E6007



HSD-E6002



Cover material	ABS
Transparent cover material	ABS transparent
Base material	ABS
Product size	29.5*9.5*23cm
Product net weight	0.67kg
Product gross weight	0.875kg
Packaging size	30*10.5*23.8cm





HSD-E012



HSD-E012



HSD-E51018



HSD-E011





AEROSOL DISPENSER SERIES



HSD-M7008



HSD-M7009



HSD-X1001

BABY
CHANGING STATION



HSD-X1005



HSD-X1006



HSD-X1002



Two-in-one faucet with liquid outlet and water outlet,
soap liquid is discharged from the top and
water outlet from the bottom.

The new form, the combination of upper and lower functions, makes the product
different from all products on the market.

This product makes it easier for the designed user to
operate without having to think about how to use it.
Make users more hygienic and more convenient in public places.



CONTROL BOX



HSD-C20110



Two-in-one faucet with liquid outlet and water outlet, soap liquid is discharged from the top and water outlet from the bottom.

The new form, the combination of upper and lower functions, makes the product different from all products on the market. This product makes it easier for the designed user to operate without having to think about how to use it. Make users more hygienic and more convenient in public places.



Future smart faucet,
smart faucet future bathroom.
Built-in foam hand sanitizer,
you can turn on/off the faucet with
a swipe in the air, display the indoor
temperature in real time,
the status is clear at a glance,
water storage in three minutes,
a new experience in the smart bathroom space.
Non-contact control,
automatic wake-up by human body detection,
automatic water shutdown,
automatic constant water flow,
built-in foam hand sanitizer and
many other functions.

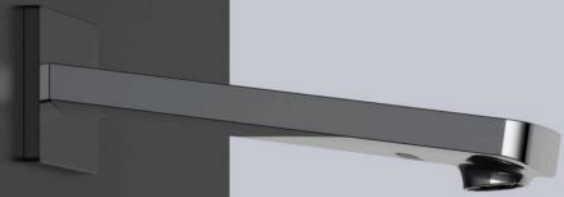


HSD-C20109



Unique human body detection device,
the faucet will automatically turn
on when the user approaches,
and automatically turn off when
the user leaves.
Even if the user forgets to turn
off the water, don't worry,
the system will automatically turn off
the water after the user leaves.
When the water is out,
the hand-washing foam will auto-
matically stop to spray
out the foam,
saving the foam liquid.

Hand sanitizer pumping liquid can
be long-pressed/short-pressed,
a long press can last up to 3 seconds,
and can be operated directly
according to different needs for
different length of time.
Food-grade 304 stainless
steel water pipe,
fast heating type without
inner tank structure,
fresh running water is more hygienic,
as soon as it's heated it will be used,
no water accumulation,
no scale formation





SENSOR FAUCET



HSD-C20105



HSD-C20106



HSD-C2091



HSD-C2095



HSD-C2092



HSD-C2096



HSD-C211

Future smart faucet,
smart faucet future bathroom.
Built-in foam hand sanitizer,
you can turn on/off the faucet with
a swipe in the air, display the indoor
temperature in real time,
the status is clear at a glance,
water storage in three minutes,
a new experience in the smart bathroom space.
Non-contact control,
automatic wake-up by human body detection,
automatic water shutdown,
automatic constant water flow,
built-in foam hand sanitizer and
many other functions.



INTERHASA
INTELLIGENT TECHNOLOGY



STAINLESS
COMBINED CABINET
SERIES



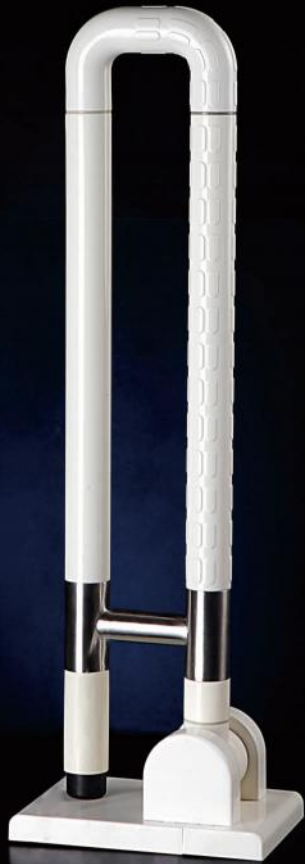
HSD-738A



HSD-728A



HSD-728B



SAFETY RAILS
SERIES



HSD-G9025



HSD-G9013



HSD-G9014



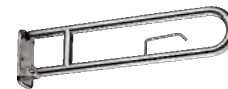
HSD-G9015



HSD-G9017



HSD-G9018



HSD-G9019



HSD-G9020



HSD-G9021



HSD-G9022



HSD-G9023



HSD-G9024



HSD-G9028



HSD-G9029



HSD-G9030



HSD-G9004



HSD-G9005



HSD-G9051



HSD-G9003



HSD-G9039



HSD-G9033



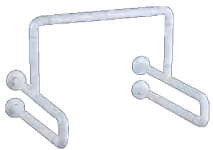
HSD-G9008



HSD-G9010



HSD-G9011



HSD-G9034



HSD-G9035



HSD-G9036



HSD-G9058



HSD-G9038



HSD-G9001

